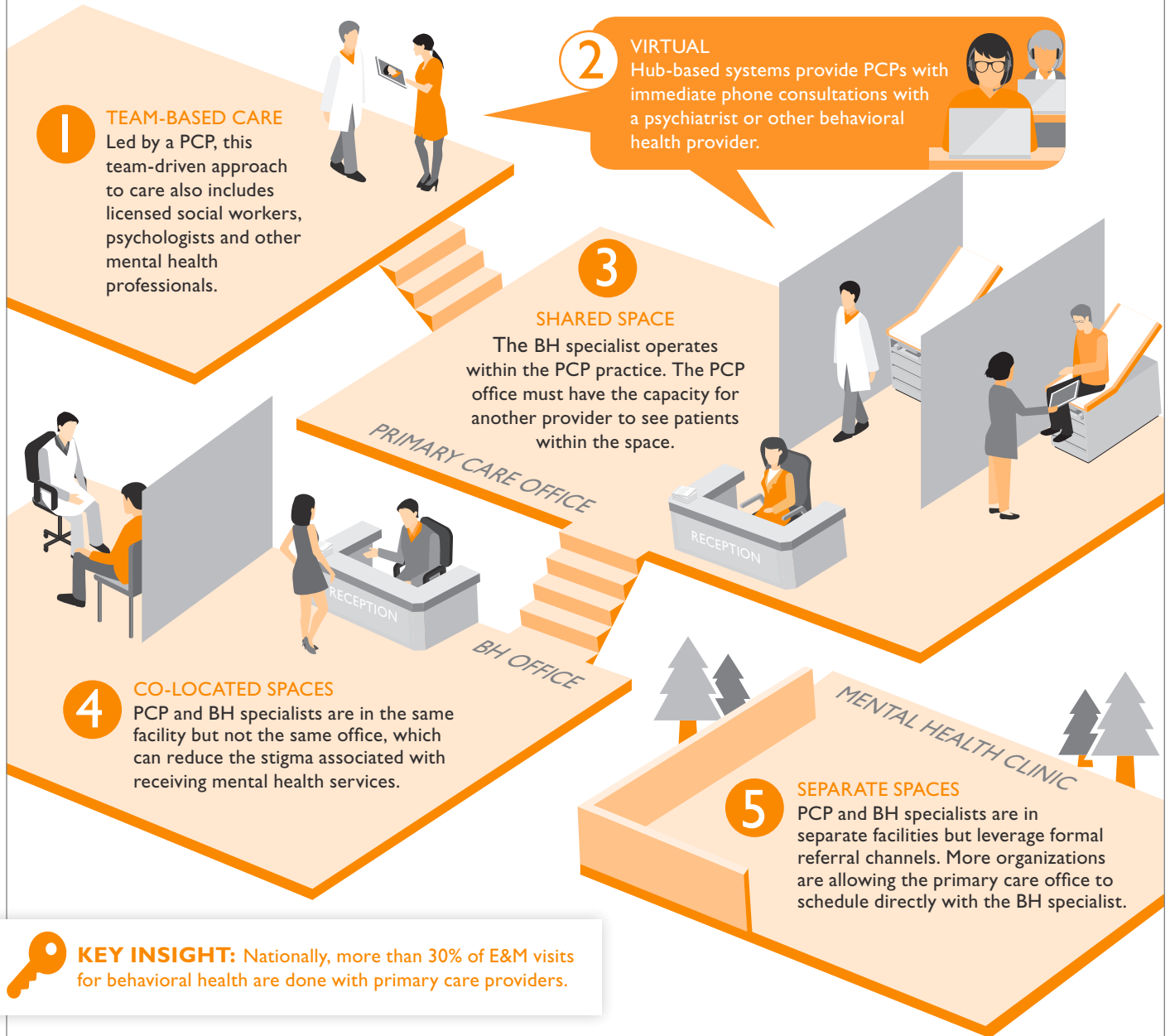


# 5 MODELS FOR INTEGRATING BEHAVIORAL HEALTH INTO PRIMARY CARE

Integrated care, the systematic coordination of general and behavioral health care, improves both behavioral and general health outcomes, reduces use of emergency and inpatient care, and decreases care costs. Reimbursement challenges, behavioral health specialist shortages and regulatory considerations vary by state and market, prompting a range of models and approaches.



**KEY INSIGHT:** Nationally, more than 30% of E&M visits for behavioral health are done with primary care providers.

BH = behavioral health; E&M = evaluation and management; PCP = primary care provider.  
Sources: Agency for Healthcare Research and Quality. *Lexicon for Behavioral Health and Primary Care Integration*. April 2013; Sg2 Analysis, 2017.

## LEARN MORE!

To explore successful models for integrating behavioral health into primary care, visit [Sg2.com](http://Sg2.com) to read the full article, [You Asked: Integrating Behavioral Health and Primary Care](#).

# Sg2.com

Sg2, a Vizient company, is the health care industry's premier authority on health care trends, insights and market analytics.

Our analytics and expertise help hospitals and health systems achieve sustainable growth and ensure ongoing market relevance through the development of an effective System of CARE.